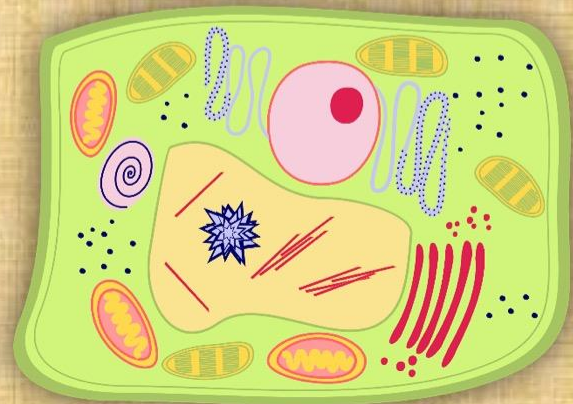
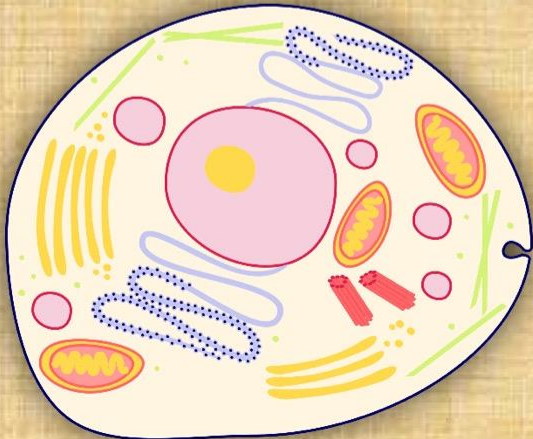


Plant and Animal Cells



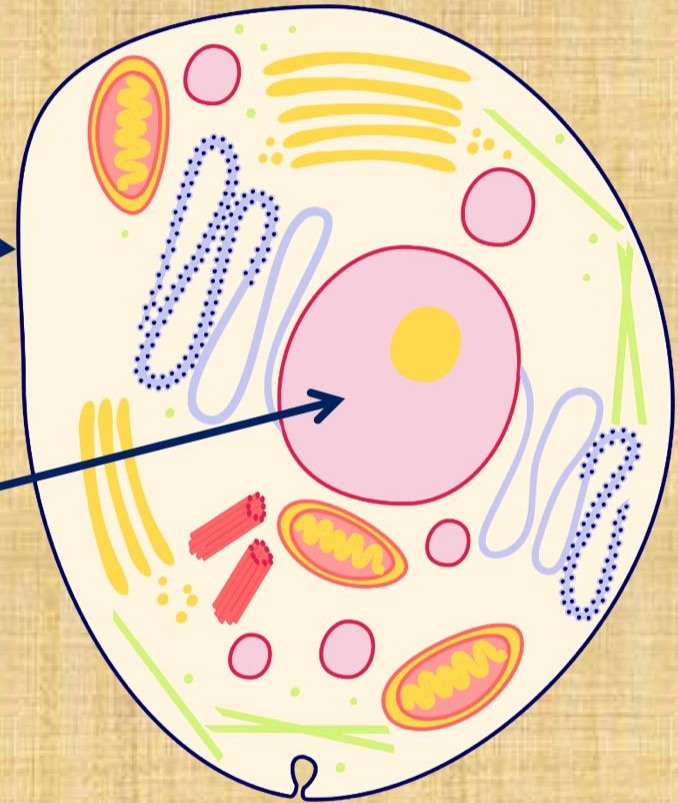
Animal Cells

- Animal and plant cells have some of the same parts
 - Cell membrane –allows materials to move in and out



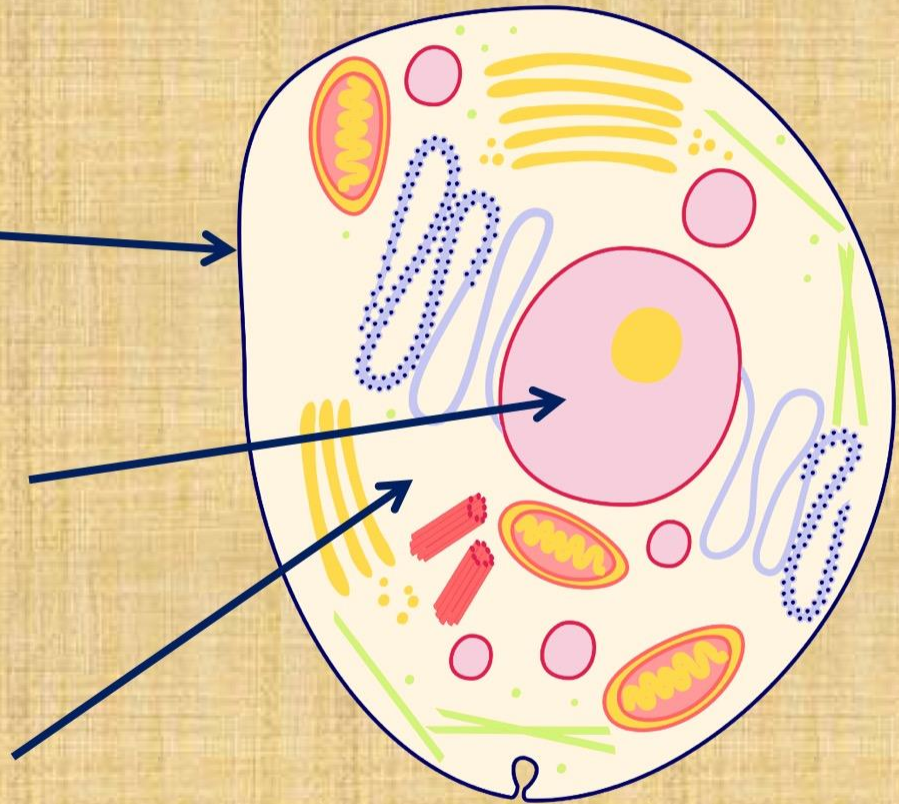
Animal Cells

- Animal and plant cells have some of the same parts
 - Cell membrane –allows materials to move in and out
 - Nucleus – controls the cell's growth and contains its genes



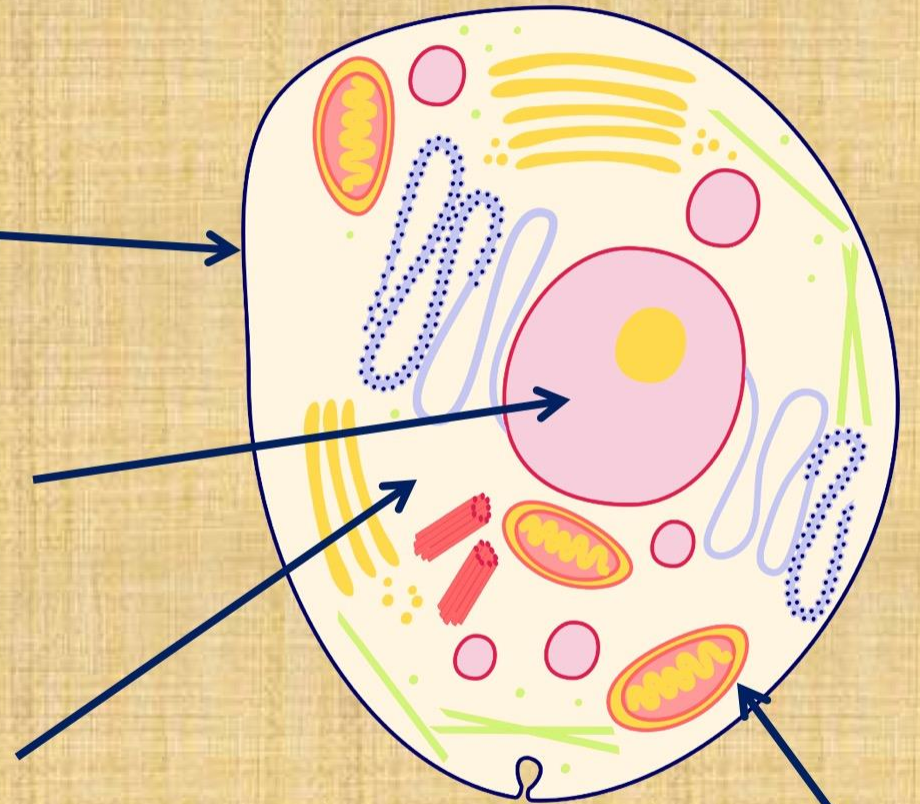
Animal Cells

- Animal and plant cells have some of the same parts
 - Cell membrane – allows materials to move in and out
 - Nucleus – controls the cell's growth and contains its genes
 - Cytoplasm – jelly-like substance that surrounds the nucleus



Animal Cells

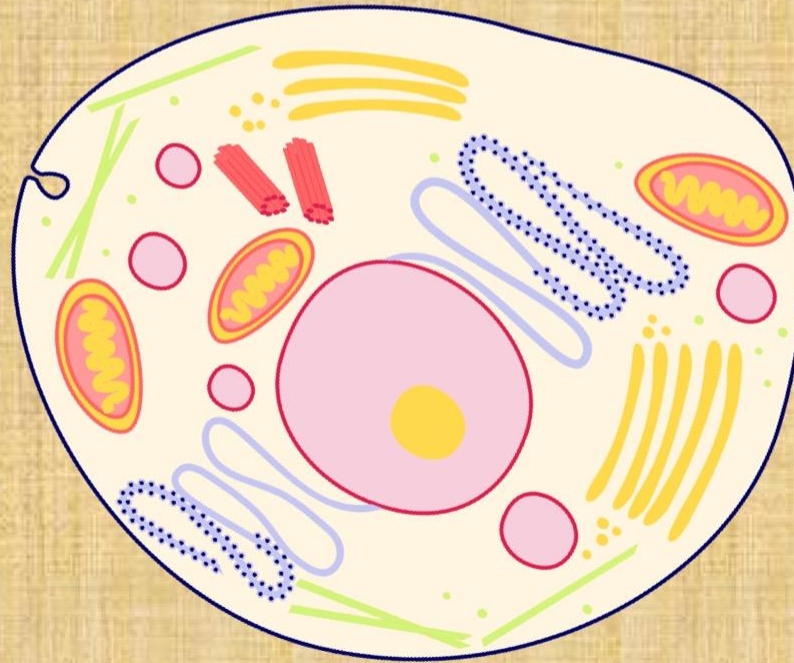
- Animal and plant cells have some of the same parts
 - Cell membrane – allows materials to move in and out
 - Nucleus – controls the cell's growth and contains its genes
 - Cytoplasm – jelly-like substance that surrounds the nucleus



–Organelles – Other small structures that do certain jobs in a cell

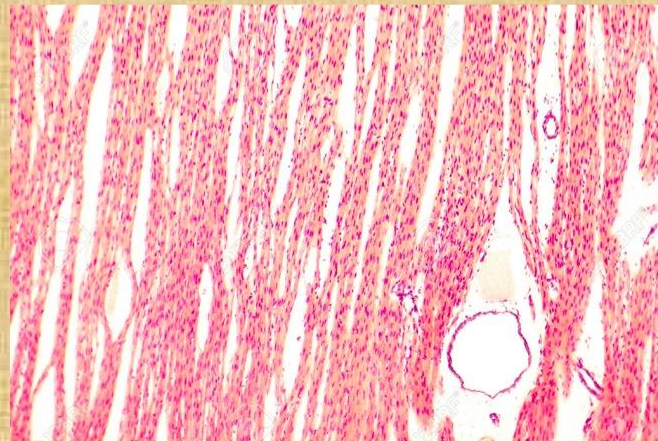
Animal Cells

- Animal cells do NOT have cell walls
 - This is an advantage – why do you think?



Animal Cells

- Without cell walls, animal cells can take on different shapes
 - Ex. Nerve cells, muscle cells, blood cells
- Different kinds of cells have allowed animals to develop muscles, bones, and nerves
 - This gives animals the ability to move from place to place (unlike plants)





Animal Cells

Print

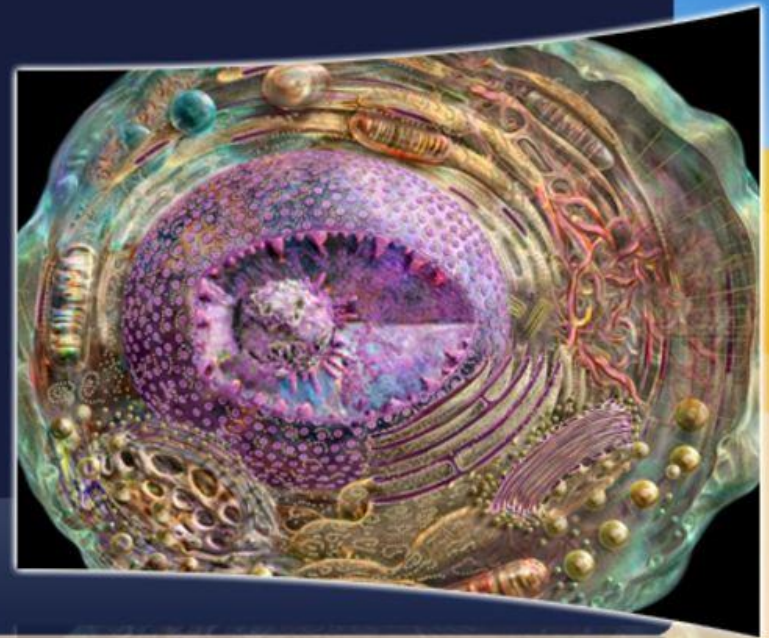
Animal cells have many functions that support the life of the animal. Animal cells also have lots of different parts, including the cell body, cytoplasm, mitochondria, nucleus, vacuole, and cell membrane.

Slide Show

Test Yourself

Key Vocabulary

- cell
- nucleus
- organism
- cytoplasm



<http://studyjams.scholastic.com/studyjams/jams/science/animals/animal-cells.htm>

Animal Cells

- Animal cells do NOT have chloroplasts
 - Animals cannot produce their own food
 - They eat plants, animals, or both
- Animal cells are smaller than plant cells
 - Need a microscope to see both



Animal and Plant Cells

- Both animal and plant cells have many other parts (organelles)
 - Some help store and digest food
 - Others get rid of wastes
 - Some help the plant and animal grow
 - Others pass genes from cell to offspring

Welcome to the *CELLS alive!* Cell Model

To begin, choose Animal Cell or Plant Cell

 Schedule

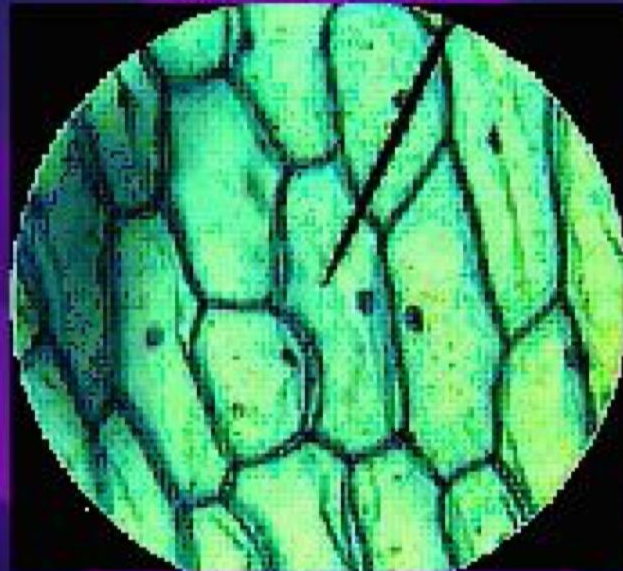
Animal Cell

Plant Cell



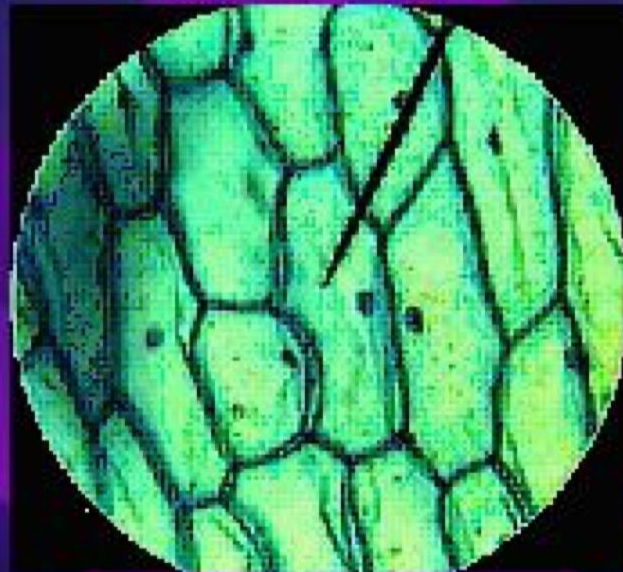
https://www.cellsalive.com/cells/cell_model_js.htm

What is this?

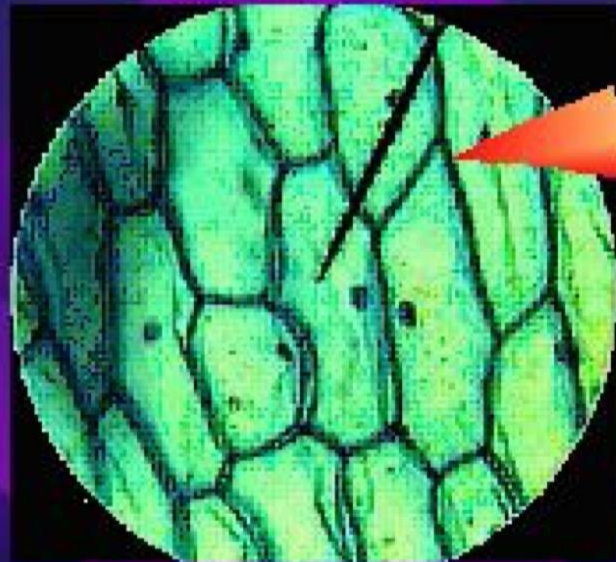


Plant Cell

What is this?

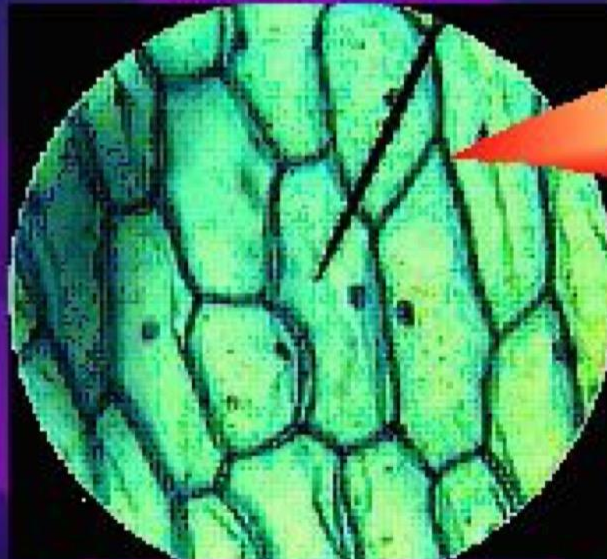


What is this part?

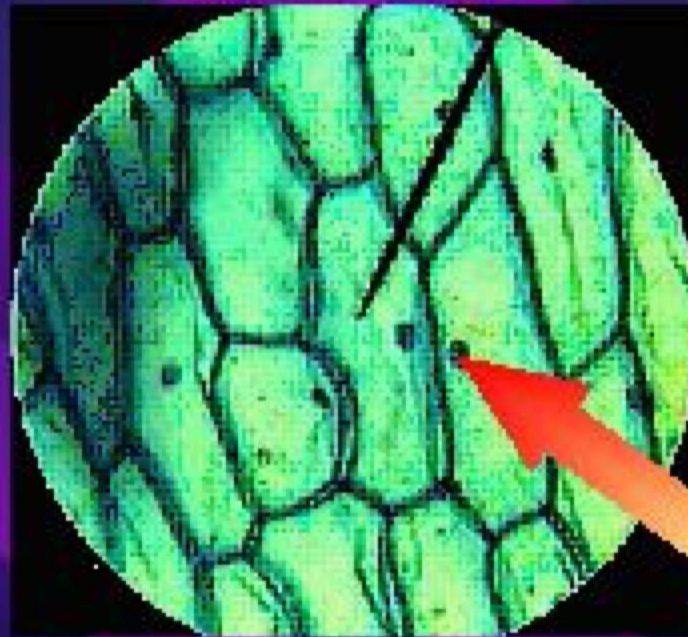


Cell Wall

What is this part?

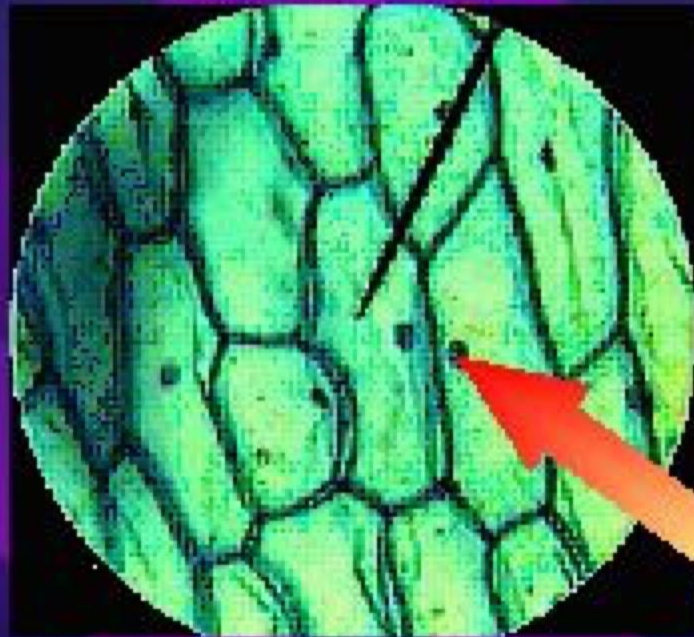


What is this part called?

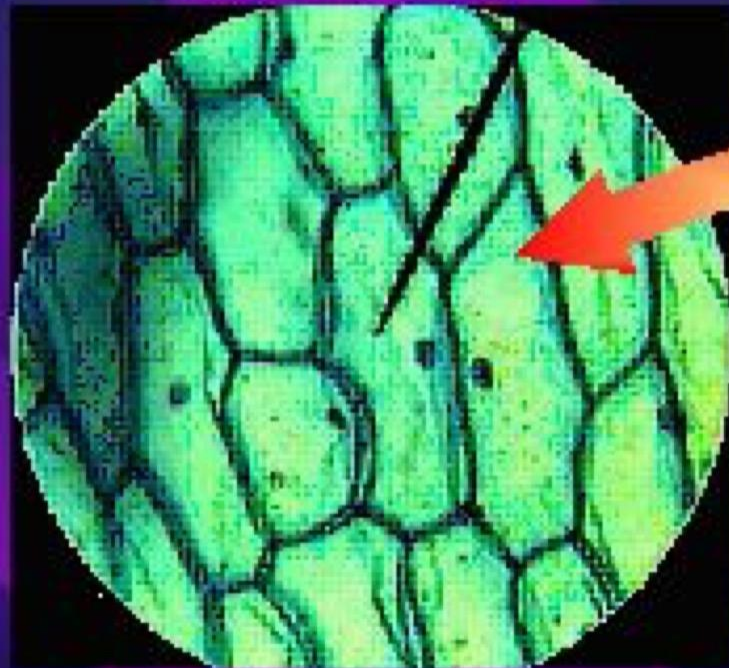


Nucleus

What is this part called?

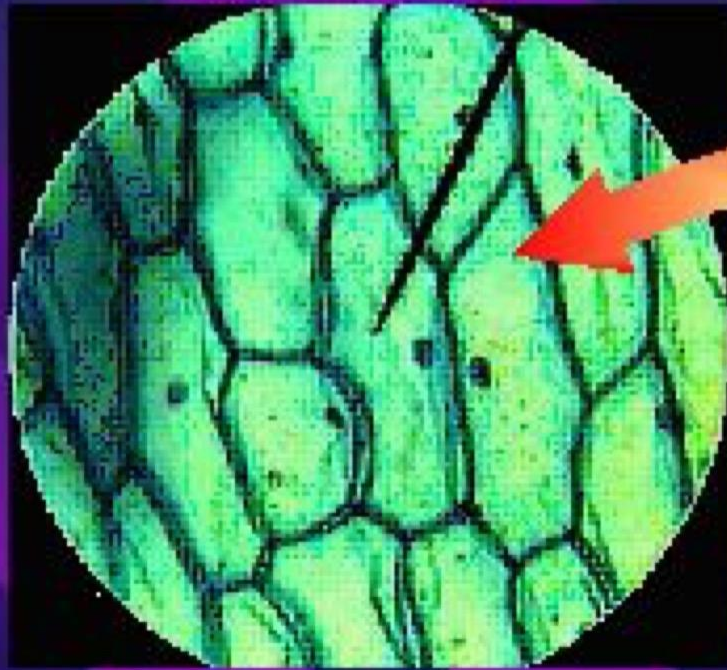


What part of the cell is this?

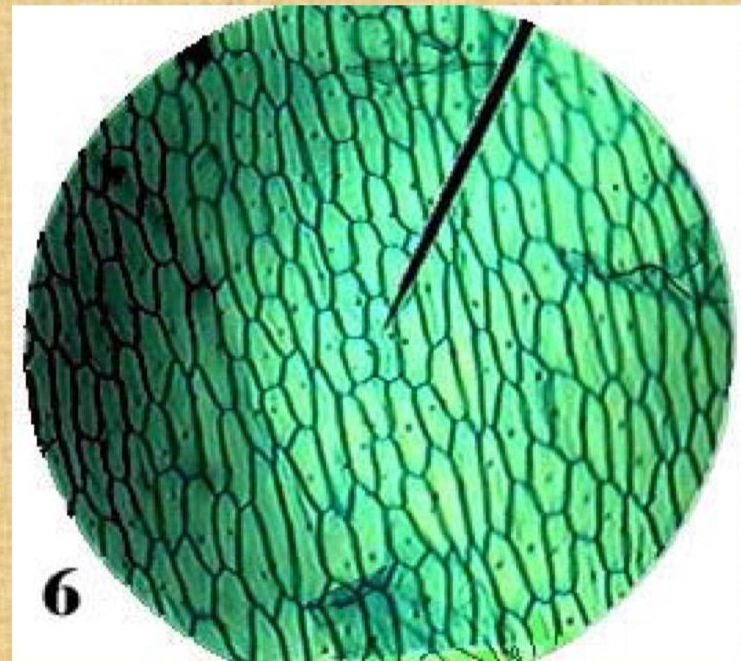
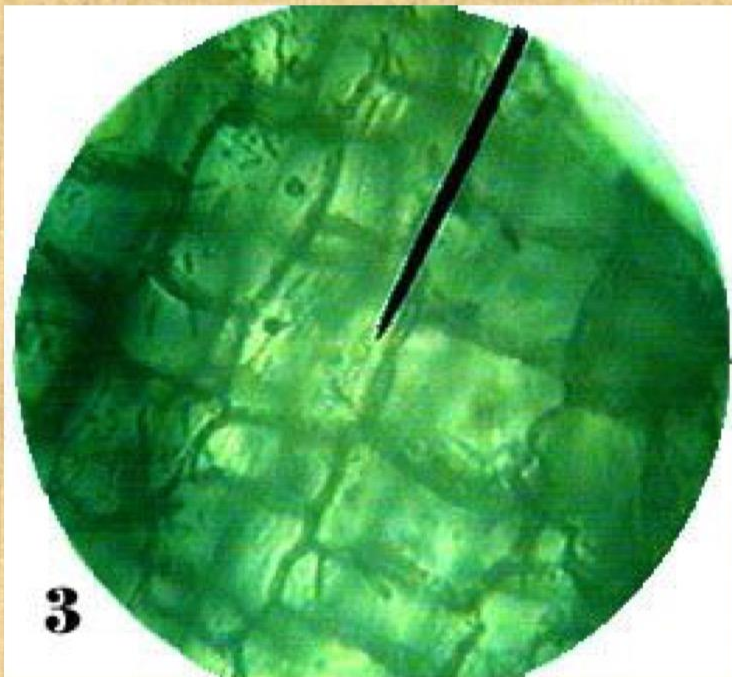


Cytoplasm

What part of the cell is this?



More Plant Cells



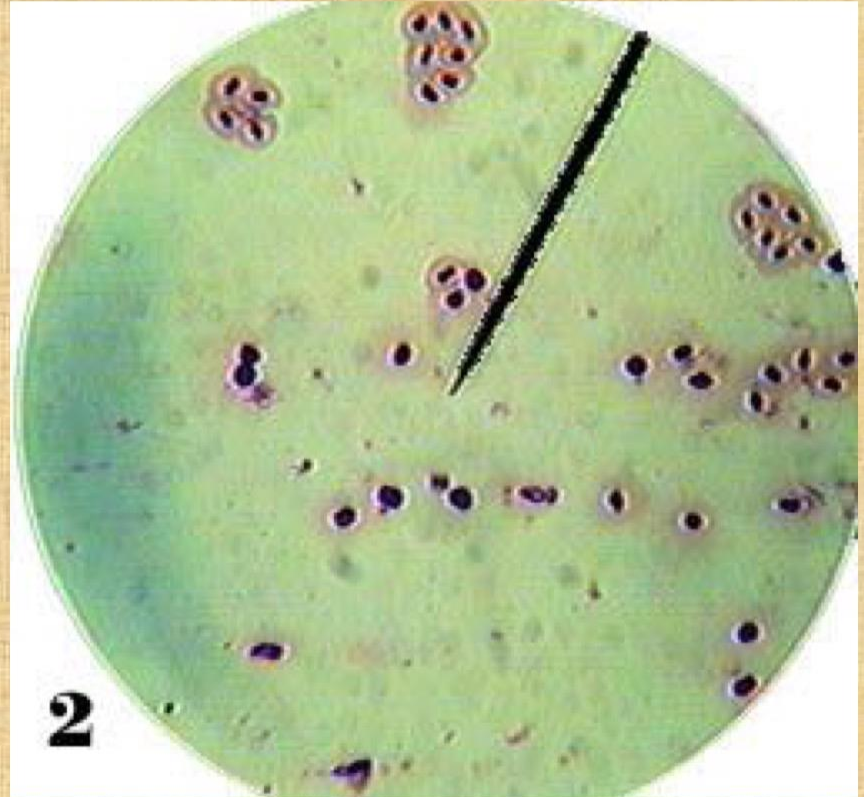
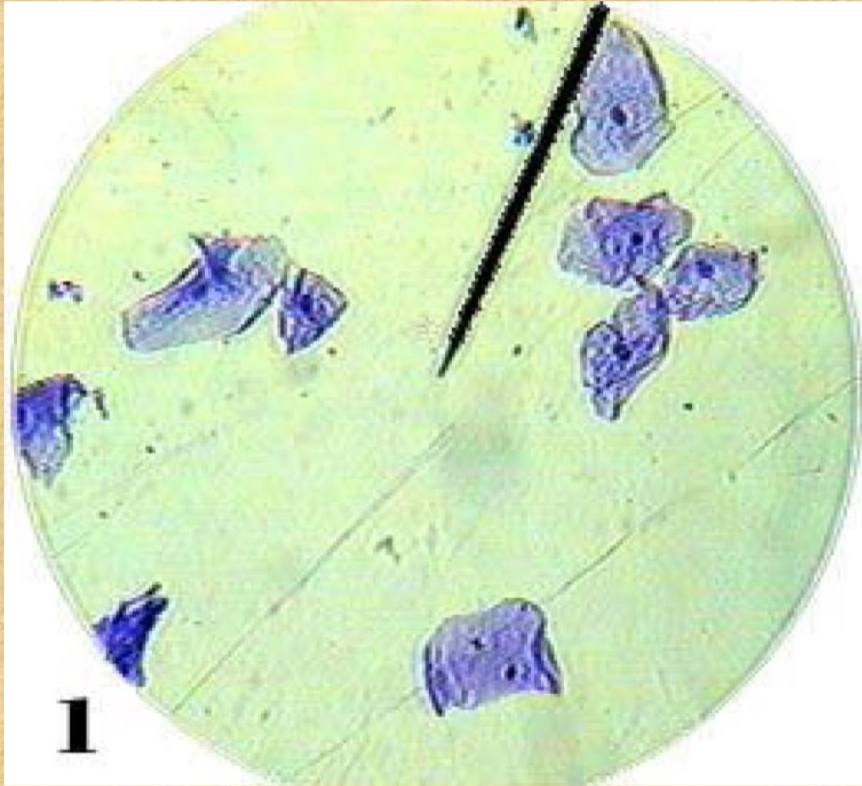
Which parts can you identify?

Animal Cells

This is a cheek cell



Animal Cells



First things first, there's two different types



<https://safeshare.tv/x/eEreniRASI>

Parts of Plant and Animal Cells

Cells	Function	Plants	Animals
Nucleus			
Cell Membrane			
Cell Wall			
Cytoplasm			
Chloroplasts			



<https://safeshare.tv/x/ss5c7da3c24492d#>